



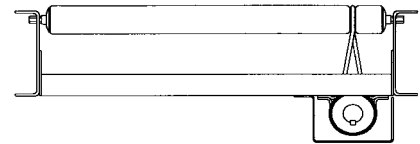
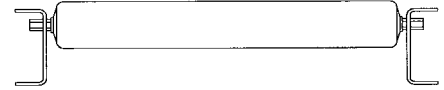
901 Metzgar Street NW  
Comstock Park, MI 49321  
Phone: (616) 784-0930  
Fax: (616) 784-4100  
Toll Free: (888) 266-8390  
www.metzgarconveyors.com  
Email: sales@metzgarconveyors.com



## ***Manufacturer for all of your conveyor needs!***

### **Gravity Conveyor:**

- Ball Transfer Units (individual units, drop-in strips and complete ball transfer tables)
- 3/4" Diameter Roller Midget Series
- 1-3/8" Diameter Roller SD138 Series
- 1-15/16" Diameter Wheel Series
- 1.9" Diameter Roller MD190 Series
- 2-1/2" Diameter Roller HD250 Series
- Full Line of Accessories including curves, merges and diverts

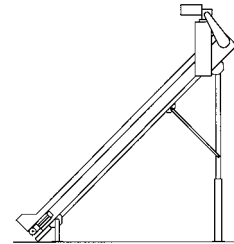


### **Lineshaft Driven Live Roller Conveyor:**

- 1-3/8" Diameter Roller 438 Series
- 1.9" Diameter Roller 440 Series
- 2-1/2" Diameter Roller 443 Series "Mattress Style"
- 2-1/2" Diameter Roller 445 Series
- Full Line of accessories including transfers, pop-up stops, brakes, curves, merges and diverts

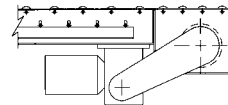
### **Belt Conveyor:**

- Slider Bed Belt Conveyor 701 Series
- Belt on Roller Belt Conveyor 801 Series
- Portable Power Helper 725 Series
- Booster Stacker 730 Series
- Press Conveyor 750 Series
- Flat Wire Belt 760 and 765 Series



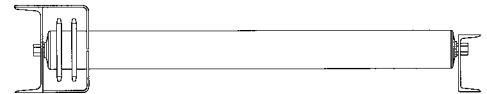
### **Belt Driven Live Roller Conveyor:**

- 1.9" Diameter Roller 401 Series
- 1.9" Diameter Roller Accumulating 430 Series
- 1.9" Diameter Roller Electronic Accumulating 435 Series
- 2-1/2" Diameter Roller 460 Series
- 1.9" Diameter Roller V-Belt Driven Curves and Spurs 450 Series



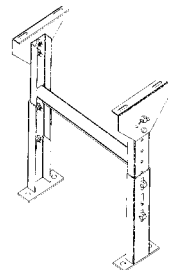
### **Chain Driven Live Roller Conveyor:**

- 1.9" Diameter 470 Series
- 2-1/2" Diameter 480 Series
- Full Line of accessories including transfers, pop-up stops and clutch/brakes



### **Accessories:**

- Standard Duty to Heavy Duty Supports to fit your application
- Turntables, Traffic Cops and Guard Rail to fit your application



### **Controls:**

- Standard Control Packages including reversing, non-reversing and variable speed
- Custom Control Packages to suit your specific requirements

## Fraction, Decimal and Millimeter Equivalents

Fraction	Decimal	mm	
	1/64	0.01563	0.40
	1/32	0.03125	0.79
	3/64	0.04688	1.19
<b>1/16</b>		0.06250	1.59
	5/64	0.07813	1.98
	3/32	0.09375	2.38
	7/64	0.10938	2.78
<b>1/8</b>		0.12500	3.18
	9/64	0.14063	3.57
	5/32	0.15625	3.97
	11/64	0.17188	4.37
<b>3/16</b>		0.18750	4.76
	13/64	0.20313	5.16
	7/32	0.21875	5.56
	15/64	0.23438	5.95
<b>1/4</b>		0.25000	6.35
	17/64	0.26563	6.75
	9/32	0.28125	7.14
	19/64	0.29688	7.54
<b>5/16</b>		0.31250	7.94
	21/64	0.32813	8.33
	11/32	0.34375	8.73
	23/64	0.35938	9.13
<b>3/8</b>		0.37500	9.53
	25/64	0.39063	9.92
	13/32	0.40625	10.32
	27/64	0.42188	10.72
<b>7/16</b>		0.43750	11.11
	29/64	0.45313	11.51
	15/32	0.46875	11.91
	31/64	0.48438	12.30
<b>1/2</b>		0.50000	12.70

Fraction	Decimal	mm	
	33/64	0.51563	13.10
	17/32	0.53125	13.49
	35/64	0.54688	13.89
<b>9/16</b>		0.56250	14.29
	37/64	0.57813	14.68
	19/32	0.59375	15.08
	39/64	0.60938	15.48
<b>5/8</b>		0.62500	15.88
	41/64	0.64063	16.27
	21/32	0.65625	16.67
	43/64	0.67188	17.07
<b>11/16</b>		0.68750	17.46
	45/64	0.70313	17.86
	23/32	0.71875	18.26
	47/64	0.73438	18.65
<b>3/4</b>		0.75000	19.05
	49/64	0.76563	19.45
	25/32	0.78125	19.84
	51/64	0.79688	20.24
<b>13/16</b>		0.81250	20.64
	53/64	0.82813	21.03
	27/32	0.84375	21.43
	55/64	0.85938	21.83
<b>7/8</b>		0.87500	22.23
	57/64	0.89063	22.62
	29/32	0.90625	23.02
	59/64	0.92188	23.42
<b>15/16</b>		0.93750	23.81
	61/64	0.95313	24.21
	31/32	0.96875	24.61
	63/64	0.98438	25.00
<b>1</b>		1.00000	25.40

Brought to You by:

